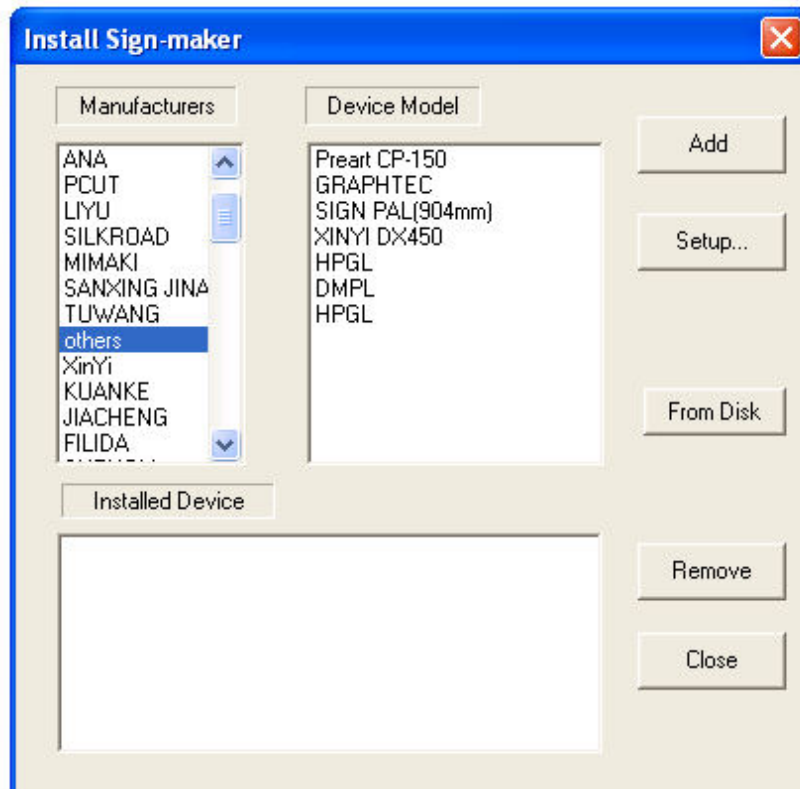
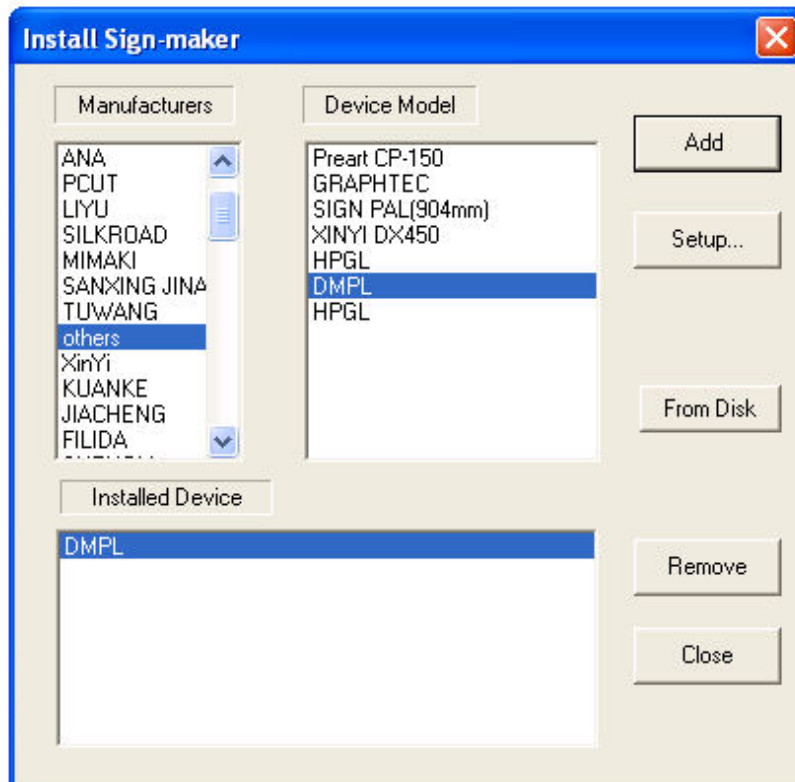


With the machine powered on and paper or vinyl loaded, look at the control panel and make sure that “Online” is in the machine LCD display, if not move the head to the desired position and select “Origin”, this puts the machine online automatically. Once the ArtCUT software is installed, create a shape in the workspace as a sample cut to install the machine.

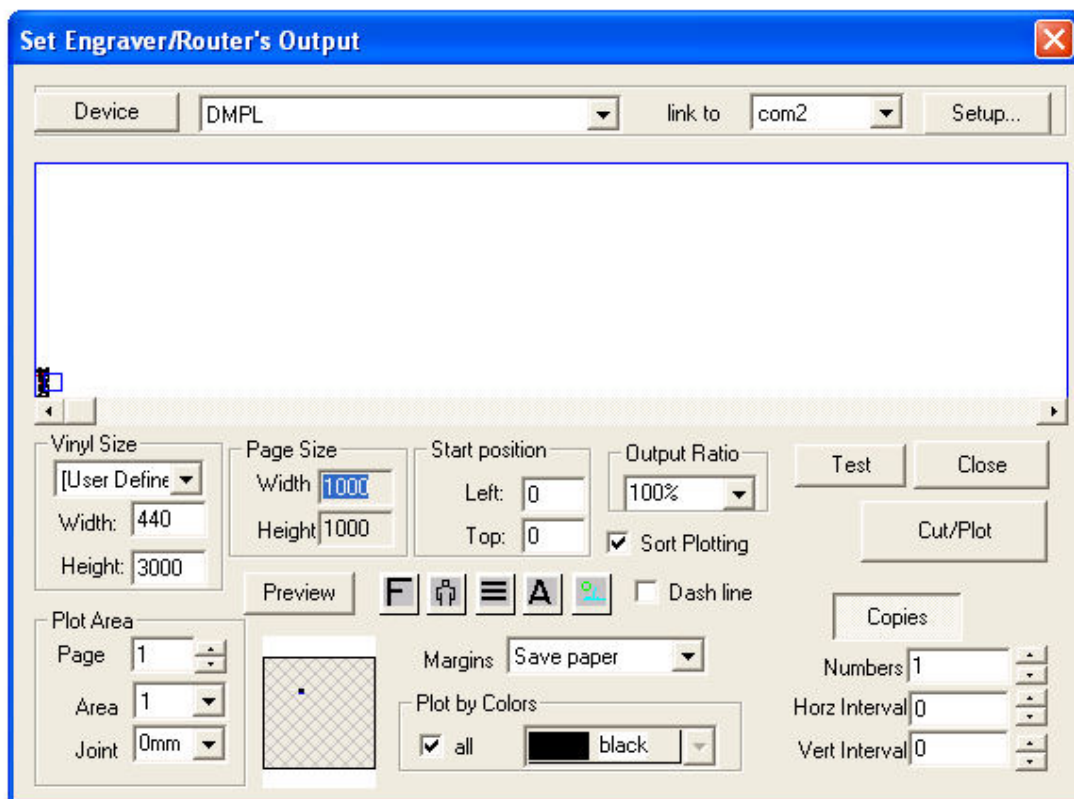
1. Select the shape, then go to “File”, then down to “Cut/Plot”
2. A message appears asking if you wish to cut selected items only, accept this by answering yes.
3. The next window will bring up a dialogue asking to select a machine type from a list



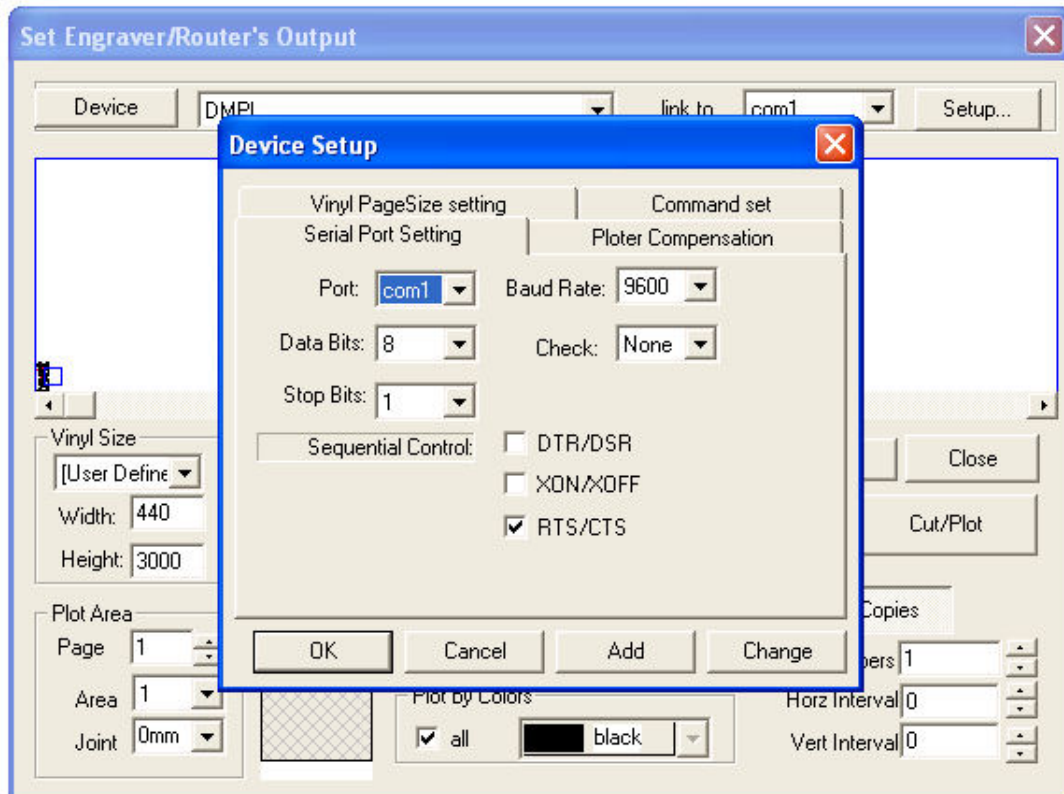
4. Click on “others” in the left hand window
5. Next, click on DMPL in the right hand window and then the “Add” button.
6. DMPL will appear in the lower window as shown



7. Once the DMPL language has appeared in the lower window, click on “Close”
8. Next you will see the “Set Router/Engraver output” box



9. You should see the DMPL language listed in the left hand drop down, in the left hand drop down, select “com1” or “com2”, then click on “Setup” next to it.



10. The next window you see is the port settings box, make sure that the select port is in the top left hand blue drop down,.....change all settings to match picture example here. Then click on OK (NOT change, as this changes the default DMPL language in the software database, you may need this later)
11. When OK is clicked, a message asking if you're sure appears, answer this with yes.
12. When this is done, click on "Cut/Plot" in the Set Engraver/Router's Output box. The next message to pop up actually sends the information to the port, click on start and the plotter should then operate.

If at this stage the plotter does not operate, go back to stage 9 and change to the other com port and the cutter should now operate.